




# Climatic Bulletin

February 2023

 **Max  
temperature**

 **Min  
temperature**

 **Mean  
temperature**

 **Precipitation**

 **Sunshine  
duration**

February was a cold month for the first half period while it was a warm one for the rest period.  
Also the mean precipitation values were lower than normal ones everywhere and mainly over the west and the north parts.  
It is remarkable that significant amounts of snow recorded over the mountainous regions of eastern mainland, Evia and north Crete.



# Temperature

### First 10-day period

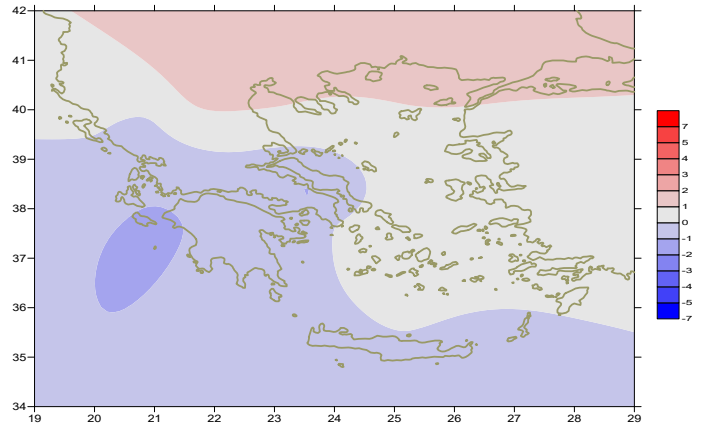
More specific (varied) :

**Minimum:**

from -12°C to 5°C over north mainland,  
 from -9°C to 6°C over central mainland,  
 from -1°C to 10°C over rest parts.

**Maximum:**

from -3.8°C to 15°C over north mainland,  
 from -2°C to 17°C over central mainland,  
 from 2°C to 14°C over rest parts.



*Deviation of mean temperature from normal values*

### Second 10-day period

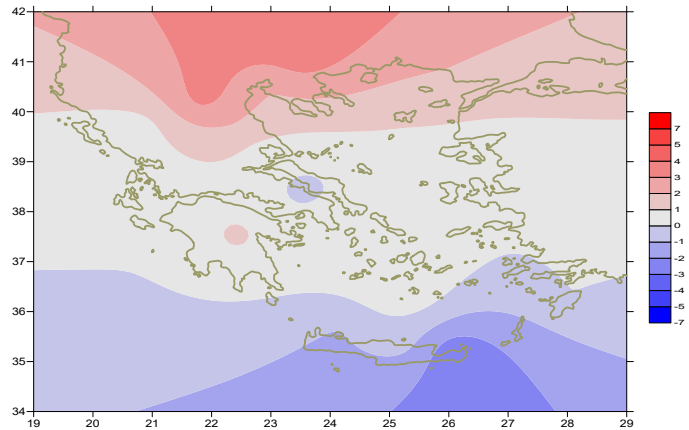
More specific (varied) :

**Minimum:**

from -11°C to 7°C over north mainland,  
 from -5°C to 11°C over central mainland,  
 from -2°C to 14°C over rest parts.

**Maximum:**

from 3°C to 20°C over north mainland,  
 from 6°C to 20°C over central mainland,  
 from 7°C to 17°C over rest parts.



*Deviation of maximum temperature from normal values*

### Third 10-day period

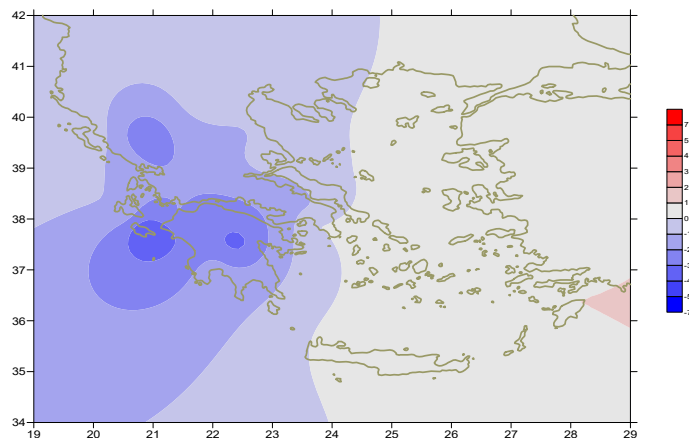
More specific (varied) :

**Minimum:**

from -4°C to 14°C over north mainland,  
 from -2°C to 15°C over central mainland,  
 from 5°C to 17°C over rest parts.

**Maximum:**

from 12°C to 22°C over north mainland,  
 from 15°C to 23°C over central mainland,  
 from 16°C to 20°C over rest parts.



*Deviation of minimum temperature from normal values*



## P r e c i p i t a t i o n

### First 10-day period

Significant amounts of precipitation.

More specific:

18mm in Karistos, 10mm in Heraklion, 15mm in Sitia, 14mm in Kasteli (1/2),  
 7mm in Araxos, 9mm in Limnos, 12mm in Karpathos, 8mm in Rodos (3/2),  
 9mm in Ikaria, 8mm in Leros (4/2),  
 30mm in Karistos, 18mm in Skiros, 31mm in Tanagra, 14mm in Paros,  
 22mm in Santorini, 13mm in Heraklion, 14mm in Souda, 18mm in Kasteli,  
 21mm in Ikaria, 11mm in Karpathos, 11mm in Leros, 20mm in Kos, 11mm in Rodos,  
 28mm in Elefsina, 19mm in Kotroni (5/2),  
 11mm in Karistos, 13mm in Kasteli, 30mm in Tanagra (6/2),  
 30mm in Souda (7/2), 12mm in Karistos, 15mm in Tanagra (8/2),  
 17mm in Oreoi (9/2).

### Second 10-day period

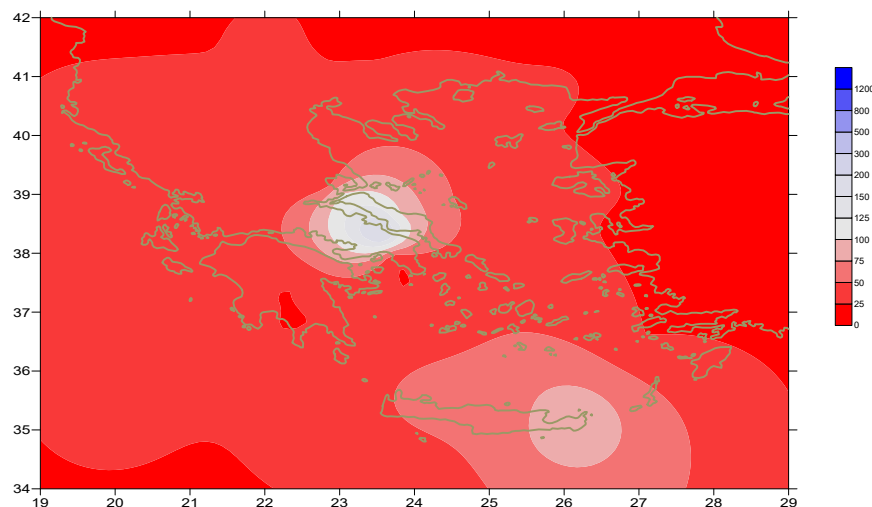
Lack of precipitation .

### Third 10-day period

Small amounts of precipitation over north parts .

More specific:

11mm in Kerkira (27/2),  
 7mm in Ormenio, 10mm in Xanthi, 10mm in Kavala,  
 10mm in Serres, 13mm in Thessaloniki, 6mm in Polikastro,  
 8mm in Kozani (28/2).



*Deviation of monthly precipitation height  
from normal values (%)*

TABLE OF MEAN VALUES

STATION	Longitude	Latitude	Tmean	TX	TN	RR	INST
SERRES	23,53	41,07	7,8	14,3	0,6	11	130
FLORINA	21,40	40,78					
KASTORIA	21,27	40,45	4,6	11,5	-3,1	2	176
TRIKALA_IMATHIAS	22,55	40,60					
THESSALONIKI	22,97	40,52	8,2	13,1	2	13	188
CHRYSOUPOLI	24,62	40,92	7,4	12,5	2	3	189
ALEXANDROUPOLI	25,95	40,85	7,3	11,6	2,6	2	173
KOZANI	21,83	40,28	5	11,2	-0,8	12	
KERKYRA	19,92	39,62	10,4	14,9	5,6	12	173
IOANNINA	20,82	39,70	5,9	12,3	-1,6	3	178
PREVEZA	20,76	38,91	10,4	14,9	5,6	12	173
TRIKALA_THESSALIAS	21,77	39,52					
LARISA	22,45	39,65	7,4	13,6	0,3	3	160
LIMNOS	25,23	39,92	8,8	12,1	5,3	11	166
ARTA	21,00	39,17					
AGHIALOS	22,78	39,21	7,6	12,9	2,9	13	157
MYTILINI	26,60	39,05	10,2	13	7,4	10	173
VELO	22,77	37,97					
AGRINIO	21,35	38,60					
LAMIA	22,43	38,87					
ANDRAVIDA	21,28	37,92	9,1	14,7	3,6	2	174
SKYROS	24,48	38,96	10,3	13	7,8	28	150
ARGOSTOLI	20,50	38,12	11,1	14,9	7,6	6	181
ARAXOS	21,42	38,15	9,7	14,6	4,5	13	186
TANAGRA	23,57	38,33	7,2	12,2	2,3	98	131
HIOS	26,13	38,35	10,2	13,2	6,6	20	164
PYRGOS	21,42	37,67					
TRIPOLI	22,40	37,52	5	11,5	-2	5	166
TATOI	23,78	38,10	7,8	12,3	3,1	20	
HELLINIKO	23,73	37,90	10,4	14,6	7,3	7	168
ELEYSINA	23,55	38,07	9,4	12,9	5,5	40	
ZAKYNTHOS	20,88	37,75	10,1	14,6	4,1	3	187
SAMOS	26,92	37,68	10,5	13,3	6,9		
ARGOS	22,75	37,63					
KALAMATA	22,02	37,07	10,1	16,2	4,2	9	182
NAXOS	25,37	37,10					
METHONI	21,70	36,82					
MHLOS	24,43	36,73					
SPATA	23,95	37,95	9,4	13,3	4,9	27	
KOS	27,08	36,80	11,2	13,5	9,2	35	
KYTHIRA	22,98	36,15					
SANTORINI	25,41	36,41	11,9	14,3	9,6	34	133
SOUDA	24,12	35,55	10,8	13,8	8,1	70	
RODOS	28,08	36,40	12,2	15,2	9,7	28	201
MYKONOS	25,35	37,43	10,7	12,6	9,6	22	
HRAKLEIO	25,18	35,33	12,1	14,9	9,1	46	158
IERAPETRA	25,73	35,02					
SITEIA	26,10	35,21	11,8	12,9	9,7	73	147
RETHYMNO	24,50	35,36					
TYMPAKI	24,76	35,06					
KASTELI	25,33	35,18	9,2	12,9	5,5	70	155
KARPATHOS	27,15	35,42	12,5	15,1	10,7	42	
PAROS	25,13	37,02	11,4	13,7	8,6	33	171
SYROS	24,95	37,42	11,3	13,8	9	29	164
IKARIA	26,35	37,68					

11,314,58,13617810,214,16,45611,314,57,89612510,713,7820210,5165,88616112,715,410,232137

**TABLE OF DEVIATIONS  
FROM NORMAL VALUES**

<b>STATION</b>	<b>TMEAN ( deviation (I)</b>	<b>PRECI (deviation % ) (II)</b>
SERRES	1.5	26
FLORINA		
THESSALONIKI	1.5	32
ALEXANDROUPOLI	1.5	3
KOZANI	1.4	38
KERKYRA	0.1	9
IOANNINA	-0.2	3
LARISA	0.6	9
LIMNOS	0.9	25
AGHIALOS	0	26
MYTILINI	0.4	10
AGRINIO		
SKYROS	0.1	44
ARGOSTOLI	-0.6	5
ARAXOS	-0.8	15
HIOS	0.4	24
HELLINIKO	-0.1	15
ZAKYNTHOS	-1.4	3
SAMOS	0.5	-
KALAMATA	-0.6	9
NAXOS		
METHONI		
SANTORINI	0.7	56
SOUDA	-0.3	62
RODOS	0.2	24
HERAKLIO	-0.1	59
SITIA	-0.6	97

(I) deviation of mean temperature from normal values  
 (II) deviation of monthly precipitation height from normal values %.



# Climatic Bulletin

## General Description

Precipitation amounts were lower than normal values over the most parts and mainly over the west and north ones. The mean temperature varied close to normal values.

### Climatic Parameters :

- ❖ **Normal Values** : normal values for various parameters (temperature, precipitation, etc) are defined as mean values calculated for 30 years. These normal values are used as basis and represent the mean situation. They can be specified in 10 daily, monthly, seasonally and yearly level and are used for the trend comparison of 10 days, month, season or year as: rainy decameron, mild winter, cool August etc.

### Measurement :

- ❖ **Precipitation**  
1 mm = 1 litre/m<sup>2</sup>

### Table Legend :

Tmean : Mean Temperature  
 TN : Minimum Temperature  
 TX : Maximum Temperature  
 RR : Precipitation height(mm)  
 INST : Sun Duration (hours)

### UTC hours (Universal Time Coordinates) in Greece :

- ❖ Winter : UTC hour = local hour - 2
- ❖ Summer : UTC hour = local hour - 3

© Hellenic National Meteorological Service  
 Reproduction is prohibited without written authorization  
 14 El.Venizelou 16777  
 Helliniko, Athens  
 Greece