




Climatic Bulletin

January 2022

 **Max
temperature**

 **Min
temperature**

 **Mean
temperature**

 **Precipitation**

 **Sunshine
duration**

Greece affected by two significant weather systems. The first one had a short duration (11-12/1) and caused floods over central parts.

The second weather system-the major one- transferred extremely cold air masses towards Greece for a long time (23-26/1). In particular the passage of those cold air masses over warm and moist sea areas caused snowstorms and heavy snowfalls with long duration.

The more affected areas were Attica, Viotia and Evia, the most parts of central and south Aegean area while high amounts of snow covered the mountainous Crete.

Also gale force north winds affected the whole country for a long time.



Temperature

First 10-day period

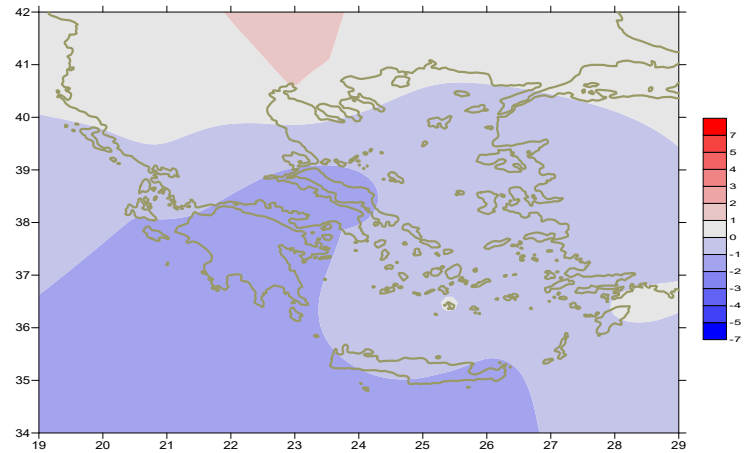
More specific (varied) :

Minimum:

from -4°C to 9°C over north mainland,
 from -2°C to 11°C over central mainland,
 from +4°C to 15°C over rest parts.

Maximum:

from 4°C to 20°C over north mainland,
 from 11°C to 21°C over central mainland,
 from 9°C to 19°C over rest parts.



Deviation of mean temperature from normal values

Second 10-day period

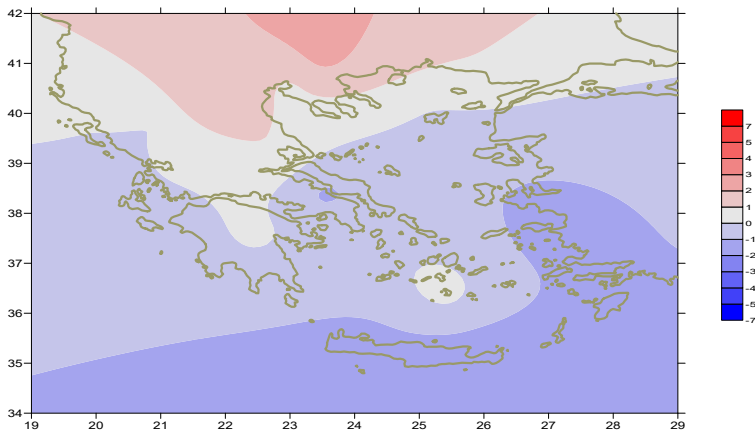
More specific (varied) :

Minimum:

from -15°C to 10°C over north mainland,
 from -5°C to 10°C over central mainland,
 from 0°C to 15°C over rest parts.

Maximum:

from -3.6°C to 13°C over north mainland,
 from -3°C to 18°C over central mainland,
 from 4°C to 16°C over rest parts.



Deviation of maximum temperature from normal values

Third 10-day period

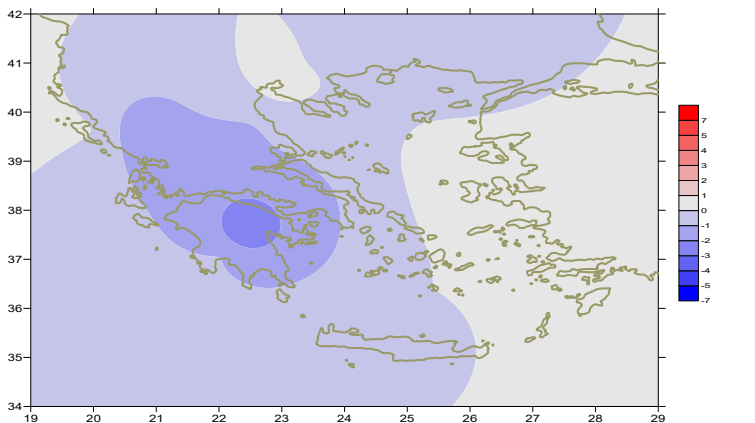
More specific (varied) :

Minimum:

from -17°C to 5°C over north mainland,
 from -13°C to 7°C over central mainland,
 from -1°C to 10°C over rest parts.

Maximum:

from -3°C to 13°C over north mainland,
 from -2.5°C to 16°C over central mainland,
 from 4°C to 15°C over rest parts.



Deviation of minimum temperature from normal values



P r e c i p i t a t i o n

First 10-day period

Locally large amounts of precipitation.

More specific:

503mm in Kasos (1/1),
29mm in Preveza, 40mm in Zakynthos, 26mm in Chios (7/1),
26mm in Argostoli, 52mm in Elefsina (8/1),
20mm in Chrissoupoli, 119mm in Kalimnos, 36mm in Kos,
99mm in Rodos, 21mm in Spata (9/1),
46mm in Edessa, 22mm in Serres, 18mm in Kasos, 20mm in Kalimnos (10/1).

Δεύτερο δεκαήμερο Second 10-day period

Large amounts of precipitation..

More specific:

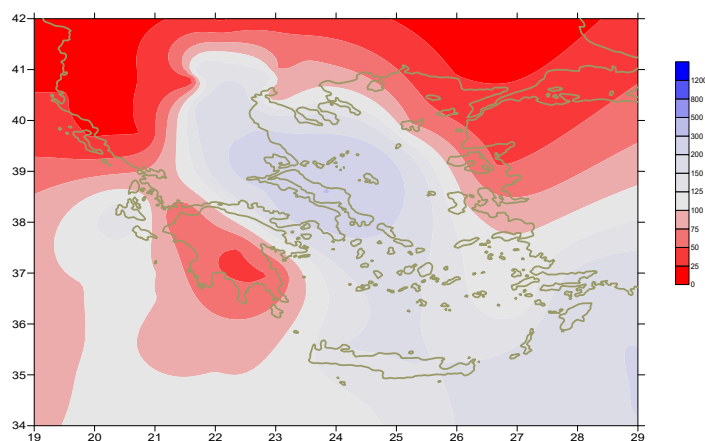
48mm in Kozani, 41mm in Larisa, 138mm in Sofades,
126mm in Aghialos, 36mm in Skiathos, 50mm in Orei(Evia),
42mm in Skiros, 53mm in Chios, 52mm in Ikaria,
37m in Karpathos, 30mm in Rodos (11/1),
23mm in Tithorea, 27mm in Tanagra, 38mm in Orei,
22mm in Paros, 46mm in Kasteli (12/1).
46mm in Kastelorizo (13/1).

Third 10-day period

Locally large amounts of precipitation.

More specific:

21mm in Preveza, 26mm in Ikaria (21/1),
32mm in Skiros, 17mm in Souda (22/1),
20mm in Mikonos, 19mm in Heraklion, 25mm in Kasteli(23/1),
72mm in Tatoi (24/1), 31mm in Souda, 36mm in Rodos, 38mm in Tatoi (25/1),
19mm in Adravida, 20mm in Kalamata, 17mm in Mikonos (29/1),
27mm in Rodos (31/1).



**Deviation of monthly precipitation height
from normal values (%)**

TABLE OF MEAN VALUES

STATION	Longitude	Latitude	Tmean	TX	TN	RR	INST
SERRES	23,53	41,07	4,8	10	-0,3	29	159
FLORINA	21,40	40,78					
KASTORIA	21,27	40,45	2,6	8,6	-3,1	17	156
TRIKALA_IMATHIAS	22,55	40,60					
THESSALONIKI	22,97	40,52	6	9,9	1,6	23	170
CHRYSOUPOLI	24,62	40,92	4,7	9,6	0,1	41	158
ALEXANDROUPOLI	25,95	40,85	4,9	9,2	0,6	12	159
KOZANI	21,83	40,28	2,3	7,5	-1,8	75	
KERKYRA	19,92	39,62	9,5	13,9	5,2	31	163
IOANNINA	20,82	39,70	4,8	10,4	-1,7	30	154
PREVEZA	20,76	38,91	8,9	13,1	5,8	86	
TRIKALA_THESSALIAS	21,77	39,52					
LARISA	22,45	39,65	4,8	10,7	-0,7	47	180
LIMNOS	25,23	39,92	7	10,5	4,1	52	153
ARTA	21,00	39,17					
AGHIALOS	22,78	39,21	5,6	11,7	1,6	140	192
MYTILINI	26,60	39,05	9	11,2	7	60	137
VELO	22,77	37,97					
AGRINIO	21,35	38,60					
LAMIA	22,43	38,87					
ANDRAVIDA	21,28	37,92	8,6	13,6	4,4	54	165
SKYROS	24,48	38,96	9,1	11,6	7,2	130	123
ARGOSTOLI	20,50	38,12	10,6	14,2	7,8	148	190
ARAXOS	21,42	38,15	9,1	13,5	4,9	31	208
TANAGRA	23,57	38,33	5,7	10,4	1,9	96	145
HIOS	26,13	38,35	9,3	11,9	6,8	117	126
PYRGOS	21,42	37,67					
TRIPOLI	22,40	37,52	3,7	9,6	-1,8	35	162
TATOI	23,78	38,10	6,4	10,7	2,8	150	
HELLINIKO	23,73	37,90	9,2	13,3	5,8	63	177
ELEYSINA	23,55	38,07	8,1	12,2	4,5	87	
ZAKYNTHOS	20,88	37,75					
SAMOS	26,92	37,68	9,4	11,9	6,9		
ARGOS	22,75	37,63					
KALAMATA	22,02	37,07	9	14,8	4,6	32	185
NAXOS	25,37	37,10					
METHONI	21,70	36,82					
MHLOS	24,43	36,73					
SPATA	23,95	37,95	7,9	11,6	3,8	57	
KOS	27,08	36,80	11,1	13,5	9,3	155	
KYTHIRA	22,98	36,15					
SANTORINI	25,41	36,41	11,4	13,6	9,1	60	131
SOUDA	24,12	35,55	9,9	13	7,4	132	110
RODOS	28,08	36,40	11,8	13,9	9,5	214	162
MYKONOS	25,35	37,43	10,2	12,6	8,5	124	
HRAKLEIO	25,18	35,33	11,1	13,9	8,6	91	121
IERAPETRA	25,73	35,02					
SITEIA	26,10	35,21	11,1	13,8	9,4	104	120
RETHYMNO	24,50	35,36					
TYMPAKI	24,76	35,06					
KASTELI	25,33	35,18	7,6	10,6	5,7	199	097
KARPATIOS	27,15	35,42	12,5	14,4	10,7	106	
PAROS	25,13	37,02	11,3	13,7	9,1	176	125
SYROS	24,95	37,42	10,5	12,8	8,5	127	142
IKARIA	26,35	37,68					

11,314,58,13617810,214,16,45611,314,57,89612510,713,7820210,5165,88616112,715,410,232137

**TABLE OF DEVIATIONS
FROM NORMAL VALUES**

STATION	TMEAN (deviation) (I)	PRECI (deviation %) (II)
SERRES	1	82
FLORINA		
THESSALONIKI	1	62
ALEXANDROUPOLI	0,1	20
KOZANI	0,3	190
KERKYRA	-0,1	24
IOANNINA	0,2	23
LARISA	-0,3	158
LIMNOS	-0,5	72
AGHIALOS	-0,8	290
MYTILINI	-0,3	46
AGRINIO		
SKYROS	-0,8	166
ARGOSTOLI	-1	127
ARAXOS	-1	32
HIOS	-0,3	100
HELLINIKO	-1	139
ZAKYNTHOS		
SAMOS	-0,9	
KALAMATA	-1,2	28
NAXOS		
METHONI		
SANTORINI	0,1	93
SOUDA	-0,9	93
RODOS	0,1	145
HERAKLIO	-0,9	100
SITIA	-1,2	113

(I) deviation of mean temperature from normal values
 (II) deviation of monthly precipitation height from normal values %.

Climatic Bulletin

General Description

Precipitation amounts were higher enough than normal values over south Ionian area, over eastern and southern parts and mainly over the islands of Evia and Crete.
The mean temperature varied close to normal values.

Climatic Parameters :

- ❖ **Normal Values** : normal values for various parameters (temperature, precipitation, etc) are defined as mean values calculated for 30 years. These normal values are used as basis and represent the mean situation. They can be specified in 10 daily, monthly, seasonally and yearly level and are used for the trend comparison of 10 days, month, season or year as: rainy decameron, mild winter, cool August etc.

Measurement :

- ❖ **Precipitation**
1 mm = 1 litre/m²

Table Legend :

Tmean : Mean Temperature
TN : Minimum Temperature
TX : Maximum Temperature
RR : Precipitation height(mm)
INST : Sun Duration (hours)

UTC hours (Universal Time Coordinates) in Greece :

- ❖ Winter : UTC hour = local hour - 2
- ❖ Summer : UTC hour = local hour - 3

© Hellenic National Meteorological Service
Reproduction is prohibited without written authorization
14 El.Venizelou 16777
Helliniko, Athens
Greece