




Climatic Bulletin

November 2021

 **Max
temperature**

 **Min
temperature**

 **Mean
temperature**

 **Precipitation**

 **Sunshine
duration**

November started with a warm week and ended with a cold one. Very large amounts of precipitation affected Ionian area, west parts of mainland and Thrace while local floods recorded over the northwestern parts of Peloponnese and Attica. Also intense snowfalls covered most of the mountainous mainland.



Temperature

First 10-day period

More specific (varied) :

Minimum:

from -1.7°C to 14°C over north mainland,
 from 5°C to 16°C over central mainland,
 from 7°C to 19°C over rest parts.

Maximum:

from 10°C to 23°C over north mainland,
 from 13°C to 26°C over central mainland,
 from 14°C to 27°C over rest parts.

Second 10-day period

More specific (varied) :

Minimum:

from -4.3°C to 12°C over north mainland,
 from 0.4°C to 15°C over central mainland,
 from 5.6°C to 17°C over rest parts.

Maximum:

from 7°C to 18°C over north mainland,
 from 11°C to 18°C over central mainland,
 from 13°C to 19°C over rest parts.

Third 10-day period

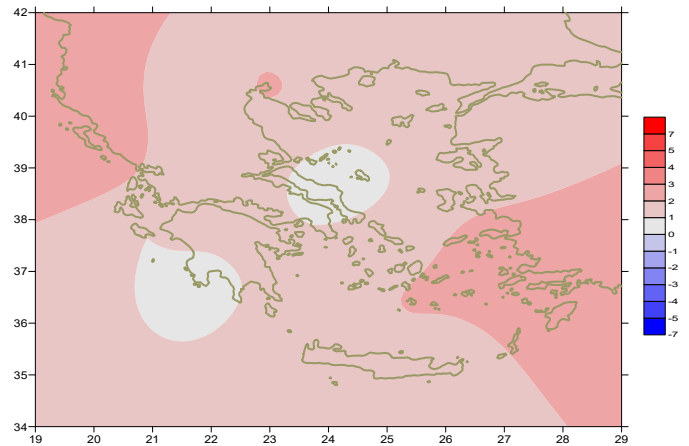
More specific (varied) :

Minimum:

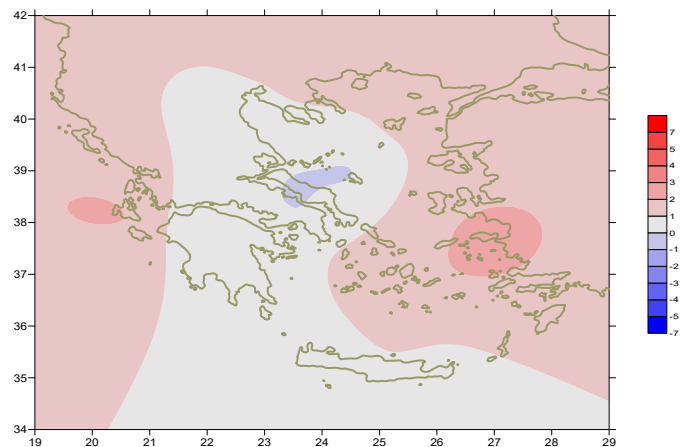
from -3.6°C to 11°C over north mainland,
 from 2°C to 18°C over central mainland,
 from 6°C to 20°C over rest parts.

Maximum:

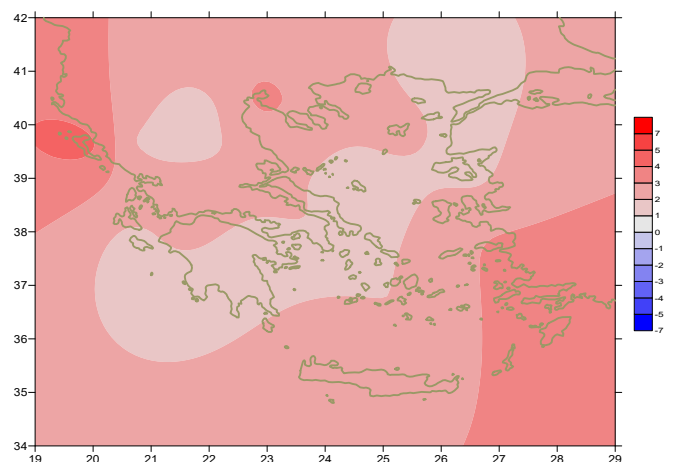
from 7°C to 20°C over north mainland,
 from 11°C to 21°C over central mainland,
 from 12°C to 23°C over rest parts.



Deviation of mean temperature from normal values



Deviation of maximum temperature from normal values



Deviation of minimum temperature from normal values



P r e c i p i t a t i o n

First 10-day period

Locally very large amounts of precipitation in the beginning

More specific:

15mm in Karpathos, 13mm in Rodos (1/11),
15mm in Alexandroupoli, 11mm in Kavala,
10mm in Florina, 8mm in Kastoria, 12mm in Preveza,
19mm in Argostoli, 13mm in Serres, 16mm in Ioannina,
12mm in Konitsa, 19mm in Argostoli, 21mm in Kerkira,
11mm in Zakynthos, 14mm in Kalamata, 12mm in Antirio (2/11).

Δεύτερο δεκαήμερο Second 10-day period

Locally very large amounts of precipitation..

More specific:

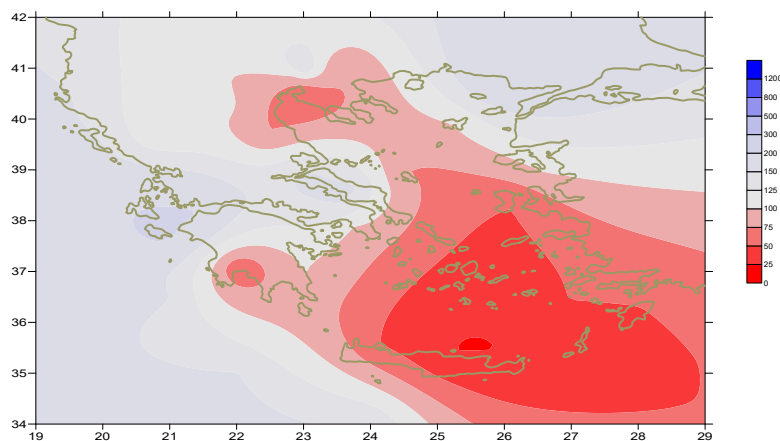
14mm in Mesologi (14/11),
10mm in Argostoli, 11mm in Zakynthos(15/11),
23mm in Gavdos (16/11),
35mm in Argostoli, 14mm in Kerkira, 58mm in Zakynthos, 26mm in Adravida,
17mm in Araxos (18/11), 16mm in Argostoli (19/11).

Third 10-day period

Locally significant amounts of precipitation.

More specific:

56mm in Kerkira (22/11), 52mm in Argostoli, 73mm in Mesologi,
45mm in Kalamata, 37mm in Kerkira, 35mm in Adravida,
40mm in Mitilini (23/11),
24mm in Tanagra, 24mm in Tatoi, 40mm in Hellinikon, 26mm in N. Filadelfia(24/11),
53mm in Alexandroupoli, 99mm in Zakynthos, 105mm in Adravida,
50mm in Araxos, 43mm in Tithorea, 26mm in Limnos, 32mm in N. Filadelfia (25/11),
37mm in Argostoli, 37mm in Zakynthos, 25mm in Mesologi, 29mm in Mitilini (27/11),
29mm in Ioannina, 18mm in Kotroni, 28mm in Limnos (28/11),
25mm in Kozani, 40mm in Preveza, 37mm in Ioannina (29/11),
18mm in Alexandroupoli, 19mm in Florina, 19mm in Kranea,
20mm in Kerkira, 27mm in Tripoli (30/11).



**Deviation of monthly precipitation height
from normal values (%)**

TABLE OF MEAN VALUES

STATION	Longitude	Latitude	Tmean	TX	TN	RR	INST
SERRES	23,53	41,07	10,8	15,7	6,7	31	98
FLORINA	21,40	40,78					
KASTORIA	21,27	40,45	9,4	14,3	5	66	87
TRIKALA_IMATHIAS	22,55	40,60					
THESSALONIKI	22,97	40,52	13,1	16,2	10	20	98
CHRYSOUPOLI	24,62	40,92	11,6	15,9	7,7	28	131
ALEXANDROUPOLI	25,95	40,85	12,3	16,3	8,4	130	120
KOZANI	21,83	40,28	9,1	13,6	5,4	65	
KERKYRA	19,92	39,62	17,1	20,5	14,1	219	97
IOANNINA	20,82	39,70	11,8	17,3	6,5	137	109
PREVEZA	20,76	38,91	16,3	20,5	13,8	152	
TRIKALA_THESSALIAS	21,77	39,52					
LARISA	22,45	39,65	12	16,5	7,6	39	105
LIMNOS	25,23	39,92	14,1	16,5	11,4	70	121
ARTA	21,00	39,17					
AGHIALOS	22,78	39,21					
MYTILINI	26,60	39,05	15,6	18,7	13,3	99	154
VELO	22,77	37,97					
AGRINIO	21,35	38,60					
LAMIA	22,43	38,87					
ANDRAVIDA	21,28	37,92	15,6	20,8	11,4	277	120
SKYROS	24,48	38,96	15,2	17,1	13,6	35	88
ARGOSTOLI	20,50	38,12	17,3	20,7	14,6	271	142
ARAXOS	21,42	38,15	16,3	19,7	13,2	225	136
TANAGRA	23,57	38,33	13,8	17,6	10	81	110
HIOS	26,13	38,35	15,5	18,8	12,3	19	162
PYRGOS	21,42	37,67					
TRIPOLI	22,40	37,52	11,4	16	6,6	98	107
TATOI	23,78	38,10	14	17,7	10,8	67	
HELLINIKO	23,73	37,90	16,4	19,7	13,6	56	138
ELEYSINA	23,55	38,07	15,9	19,2	13,2	45	
ZAKYNTHOS	20,88	37,75	16,8	20,3	13,9	340	126
SAMOS	26,92	37,68	17	20,2	13,9	0	
ARGOS	22,75	37,63					
KALAMATA	22,02	37,07	15,4	21,2	11,3	55	138
NAXOS	25,37	37,10					
METHONI	21,70	36,82					
MHLOS	24,43	36,73					
SPATA	23,95	37,95	15,3	18,6	11,5	25	
KOS	27,08	36,80	18,9	22,4	16,6	6	
KYTHIRA	22,98	36,15					
SANTORINI	25,41	36,41	17,5	19,8	15		169
SOUDA	24,12	35,55	17,3	20,1	14,9	20	98
RODOS	28,08	36,40	19,1	21,6	17	34	175
MYKONOS	25,35	37,43	16,7	18,9	15,5	18	
HRAKLEIO	25,18	35,33	18,2	21	15,6	3	136
IERAPETRA	25,73	35,02					
SITEIA	26,10	35,21	18,2	20,9	16,4	11	137
RETHYMNO	24,50	35,36					
TYMPAKI	24,76	35,06					
KASTELI	25,33	35,18	15,6	19,4	12,5	3	149
KARPATIOS	27,15	35,42	19,3	21,7	17,7	15	
PAROS	25,13	37,02	17	19,5	15	14	172
SYROS	24,95	37,42	16,8	18,9	15,2	20	149
IKARIA	26,35	37,68					

11,314,58,13617810,214,16,45611,314,57,89612510,713,7820210,5165,88616112,715,410,232137

**TABLE OF DEVIATIONS
FROM NORMAL VALUES**

STATION	TMEAN (deviation) (I)	PRECI (deviation %) (II)
SERRES	1.7	58
FLORINA		
THESSALONIKI	2.2	35
ALEXANDROUPOLI	1.3	172
KOZANI	1.1	108
KERKYRA	2.9	121
IOANNINA	2.1	83
LARISA	1.2	67
LIMNOS	1.8	93
AGHIALOS		
MYTILINI	1.1	106
AGRINIO		
SKYROS	0.5	65
ARGOSTOLI	1.6	168
ARAXOS	1.7	170
HIOS	1.7	23
HELLINIKO	1	101
ZAKYNTHOS	1	214
SAMOS	2.5	-
KALAMATA	0.7	39
NAXOS		
METHONI		
SANTORINI	2.1	-
SOUDA	1.7	28
RODOS	2.7	39
HERAKLIO	1.6	5
SITIA	1.4	18

(I) deviation of mean temperature from normal values
 (II) deviation of monthly precipitation height from normal values %.

Climatic Bulletin

General Description

Precipitation amounts were higher than normal values mainly over Ionian area and Thrace and locally over rest mainland while they were lower over Aegean area and Crete. The mean temperature varied higher than normal values almost everywhere.

Climatic Parameters :

- ❖ **Normal Values** : normal values for various parameters (temperature, precipitation, etc) are defined as mean values calculated for 30 years. These normal values are used as basis and represent the mean situation. They can be specified in 10 daily, monthly, seasonally and yearly level and are used for the trend comparison of 10 days, month, season or year as: rainy decameron, mild winter, cool August etc.

Measurement :

- ❖ **Precipitation**
1 mm = 1 litre/m²

Table Legend :

T_{mean} : Mean Temperature
 T_N : Minimum Temperature
 T_X : Maximum Temperature
 RR : Precipitation height(mm)
 INST : Sun Duration (hours)

UTC hours (Universal Time Coordinates) in Greece :

- ❖ Winter : UTC hour = local hour - 2
- ❖ Summer : UTC hour = local hour - 3

© Hellenic National Meteorological Service
 Reproduction is prohibited without written authorization
 14 El.Venizelou 16777
 Helliniko, Athens
 Greece