




# Climatic Bulletin

November 2020

 **Max  
temperature**

 **Min  
temperature**

 **Mean  
temperature**

 **Precipitation**

 **Sunshine  
duration**

In November the mean values of temperature varied higher than normal ones almost everywhere. However the main characteristic of the month was the lack of precipitation ( or the low heights of that) over most parts. As opposed to that in the island of Crete very high values of precipitation recorded mainly over mountainous areas.



# Temperature

### First 10-day period

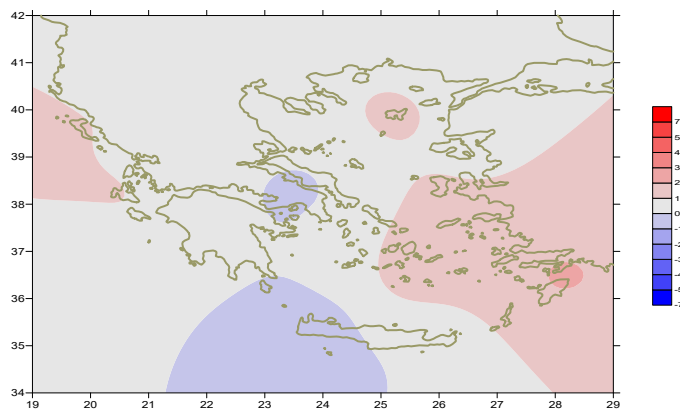
More specific (varied) :

**Minimum:**

from  $-4.5^{\circ}\text{C}$  to  $16^{\circ}\text{C}$  over north mainland,  
 from  $4^{\circ}\text{C}$  to  $17^{\circ}\text{C}$  over central mainland,  
 from  $5^{\circ}\text{C}$  to  $19^{\circ}\text{C}$  over rest parts.

**Maximum:**

from  $13^{\circ}\text{C}$  to  $22^{\circ}\text{C}$  over north mainland,  
 from  $14^{\circ}\text{C}$  to  $24^{\circ}\text{C}$  over central mainland,  
 from  $18^{\circ}\text{C}$  to  $25^{\circ}\text{C}$  over rest parts.



*Deviation of mean temperature from normal values*

### Second 10-day period

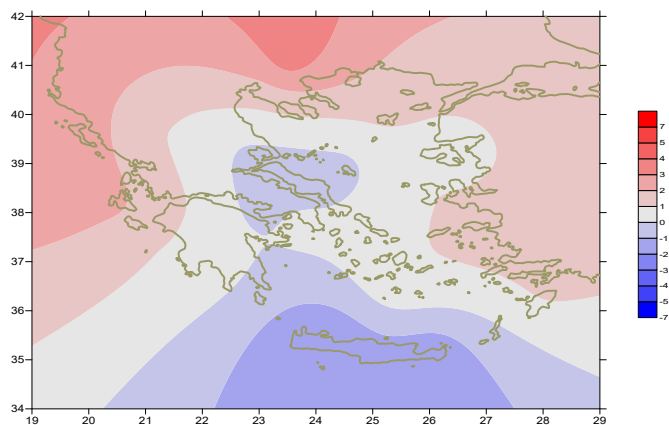
More specific (varied) :

**Minimum:**

from  $-6.6^{\circ}\text{C}$  to  $13^{\circ}\text{C}$  over north mainland,  
 from  $2^{\circ}\text{C}$  to  $17^{\circ}\text{C}$  over central mainland,  
 from  $7^{\circ}\text{C}$  to  $17^{\circ}\text{C}$  over rest parts.

**Maximum:**

from  $10^{\circ}\text{C}$  to  $19^{\circ}\text{C}$  over north mainland,  
 from  $11^{\circ}\text{C}$  to  $21^{\circ}\text{C}$  over central mainland,  
 from  $15^{\circ}\text{C}$  to  $23^{\circ}\text{C}$  over rest parts.



*Deviation of maximum temperature from normal values*

### Third 10-day period

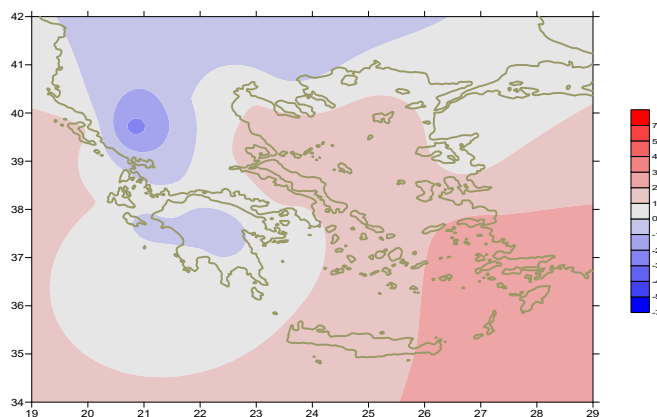
More specific (varied) :

**Minimum:**

from  $-9.7^{\circ}\text{C}$  to  $11^{\circ}\text{C}$  over north mainland,  
 from  $2^{\circ}\text{C}$  to  $15^{\circ}\text{C}$  over central mainland,  
 from  $6^{\circ}\text{C}$  to  $16^{\circ}\text{C}$  over rest parts.

**Maximum:**

from  $6^{\circ}\text{C}$  to  $17^{\circ}\text{C}$  over north mainland,  
 from  $5^{\circ}\text{C}$  to  $19^{\circ}\text{C}$  over central mainland,  
 from  $14^{\circ}\text{C}$  to  $21^{\circ}\text{C}$  over rest parts.



*Deviation of minimum temperature from normal values*



## Precipitation

### First 10-day period

Remarkable amounts of precipitation over Crete island.

More specific:

35mm in Kasteli, 13mm in Heraklion (6/11),  
126mm in Kasteli (7/11), 13mm in Souda, 17mm in Heraklion (9/11),  
50mm in Kasteli, 25mm in Souda, 78mm in Heraklion, 30mm in Sitia,  
21mm in Karpathos, 16mm in Timbaki (10/11).

### Second 10-day period

Locally remarkable amounts of precipitation.

More specific:

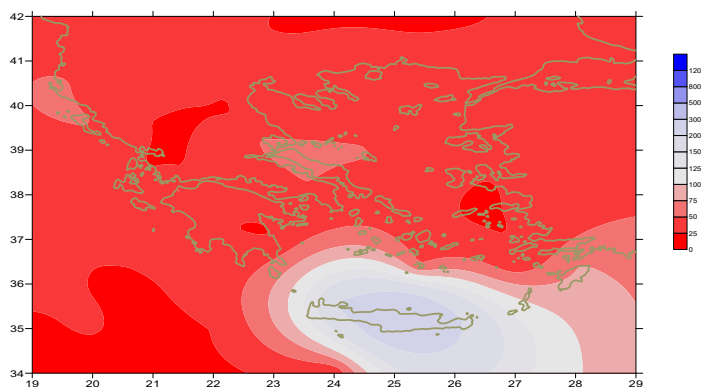
43mm in Lamia, 82mm in Souda (11/11), 13mm in Methoni (12/11),  
11mm in Limnos (14/11), 15mm in Othonoi (17/11),  
29mm in Zakynthos, 14mm in Astros (18/11),  
20mm in Tanagra, 11mm in Oreoi,  
10mm in Rodos, 11mm in Kastelorizo (19/11),  
13mm in Karistos, 26mm in Heraklion, 20mm in Souda, 139mm in Kasteli,  
26mm in Rodos (20/11).

### Third 10-day period

Locally remarkable amounts of precipitation.

More specific:

60mm in Lamia (22/11), 16mm in Kerkira, 12mm in Methoni (29/11),  
20mm in Xanthi, 13mm in Chrissoupoli, 10mm in Doxato,  
14mm in Kerkira, 21mm in Othonoi, 28mm in Skiros,  
20mm in Santorini, 34mm in Timbaki, 13mm in Chios, 14mm in Karpathos,  
27mm in Kos (28/10), 17mm in Kalimnos, 14mm in Rodos,  
48mm in Kastelorizo (30/11).



*Deviation of monthly precipitation height  
from normal values (%)*

TABLE OF MEAN VALUES

STATION	Longitude	Latitude	Tmean	TX	TN	RR	INST
RRES	23,53	41,07	9,7	17,2	3,4	7	125
FLORINA	21,40	40,78					
KASTORIA	21,27	40,45	8,1	15,4	1	4	142
TRIKALA_IMATHIAS	22,55	40,60					
THESSALONIKI	22,97	40,52	11,8	17	7,5	11	163
CHRYSOUPOLI	24,62	40,92	11,6	16,6	7	14	171
ALEXANDROUPOLI	25,95	40,85	11,5	16,4	7,1		159
KOZANI	21,83	40,28	8,5	14,3	3,8	5	
KERKYRA	19,92	39,62	15,3	21,6	11	48	154
IOANNINA	20,82	39,70	9,9	17,1	2,2	6	163
PREVEZA	20,76	38,91	15,3	20	11,6	9	
TRIKALA_THESSALIAS	21,77	39,52					
LARISA	22,45	39,65	11,4	16,5	6,3	9	
LIMNOS	25,23	39,92	13,6	16,5	10,7	12	167
ARTA	21,00	39,17					
AGHIALOS	22,78	39,21	12,5	16,7	9,3	30	114
MYTILINI	26,60	39,05	15	18	12	0	179
VELO	22,77	37,97					
AGRINIO	21,35	38,60					
LAMIA	22,43	38,87					
ANDRAVIDA	21,28	37,92	13,7	20,7	7,9	6	170
SKYROS	24,48	38,96	15,2	16,9	13,6	28	118
ARGOSTOLI	20,50	38,12	16,8	20,9	13,5	5	195
ARAXOS	21,42	38,15	15,3	20,2	10,5		209
TANAGRA	23,57	38,33	12,6	17	9,4	29	107
HIOS	26,13	38,35	15	18,1	11,7	20	192
PYRGOS	21,42	37,67					
TRIPOLI	22,40	37,52	10,2	15,7	4,5	10	151
TATOI	23,78	38,10	15,3	17	10,1	10	
HELLINIKO	23,73	37,90	15,4	19,2	12,7	2	179
ELEYSINA	23,55	38,07	15,3	18,8	12,2	18	
ZAKYNTHOS	20,88	37,75	16	20,1	12,3	44	199
SAMOS	26,92	37,68	21,7	25,8	16,7	28	
ARGOS	22,75	37,63					
KALAMATA	22,02	37,07	19,7	25,8	13,5	66	242
NAXOS	25,37	37,10					
METHONI	21,70	36,82					
MHLOS	24,43	36,73					
SPATA	23,95	37,95					
KOS	27,08	36,80	22,4	26	20	45	
KYTHIRA	22,98	36,15					
SANTORINI	25,41	36,41	22,3	24,9	19,1	51	211
SOUDA	24,12	35,55	21,6	25,5	17,9	312	214
RODOS	28,08	36,40	23,7	26,6	20,9	76	241
MYKONOS	25,35	37,43	22,5	26,3	20,2	27	
HRAKLEIO	25,18	35,33	22	25,5	18,2	304	224
IERAPETRA	25,73	35,02					
SITEIA	26,10	35,21	23,2	26	20,8	108	203
RETHYMNO	24,50	35,36					
TYMPAKI	24,76	35,06					
KASTEI	25,33	35,18	20,1	25,2	15,5	45	218
KARPATOS	27,15	35,42					
PAROS	25,13	37,02	21,9	25,1	19,1	25	232
SYROS	24,95	37,42	22,2	25,4	19,3	51	246
IKARIA	26,35	37,68					

11,314,58,13617810,214,16,45611,314,57,89612510,713,7820210,5165,88616112,715,410,232137

**TABLE OF DEVIATIONS  
FROM NORMAL VALUES**

STATION	TMEAN ( deviation ) (I)	PRECI ( deviation % ) (II)
SERRES	0.6	13
FLORINA		
THESSALONIKI	0.9	19
ALEXANDROUPOLI	0.5	0
KOZANI	0.5	8
KERKYRA	1.1	27
IOANNINA	0.2	4
LARISA	0.6	16
LIMNOS	1.3	16
AGHIALOS	0.4	48
MYTILINI	0.5	0
AGRINIO		
SKYROS	0.5	52
ARGOSTOLI	1.1	3
ARAXOS	0.7	0
HIOS	1.2	24
HELLINIKO	0	4
ZAKYNTHOS	0.2	28
SAMOS	1.6	2
KALAMATA	0.3	8
NAXOS		
METHONI		
SANTORINI	1.5	49
SOUDA	-0.3	206
RODOS	2.1	65
HERAKLIO	0.3	301
SITIA	0.3	117

(I) deviation of mean temperature from normal values  
 (II) deviation of monthly precipitation height from normal values %.

# Climatic Bulletin

## General Description

Precipitation amounts were higher enough than normal values over Crete while they were very low over the rest parts. The mean temperature varied close to the normal values over most parts.

### Climatic Parameters :

- ❖ **Normal Values** : normal values for various parameters (temperature, precipitation, etc) are defined as mean values calculated for 30 years. These normal values are used as basis and represent the mean situation. They can be specified in 10 daily, monthly, seasonally and yearly level and are used for the trend comparison of 10 days, month, season or year as: rainy decameron, mild winter, cool August etc.

### Measurement :

- ❖ **Precipitation**  
1 mm = 1 litre/m<sup>2</sup>

### Table Legend :

Tmean : Mean Temperature  
 TN : Minimum Temperature  
 TX : Maximum Temperature  
 RR : Precipitation height(mm)  
 INST : Sun Duration (hours)

### UTC hours (Universal Time Coordinates) in Greece :

- ❖ Winter : UTC hour = local hour - 2
- ❖ Summer : UTC hour = local hour - 3

© Hellenic National Meteorological Service  
 Reproduction is prohibited without written authorization  
 14 El.Venizelou 16777  
 Helliniko, Athens  
 Greece